

The WISDOM WAVE

Newsletter

Volume 8 Issue 2

Patricia Brown, Editor

July 1997

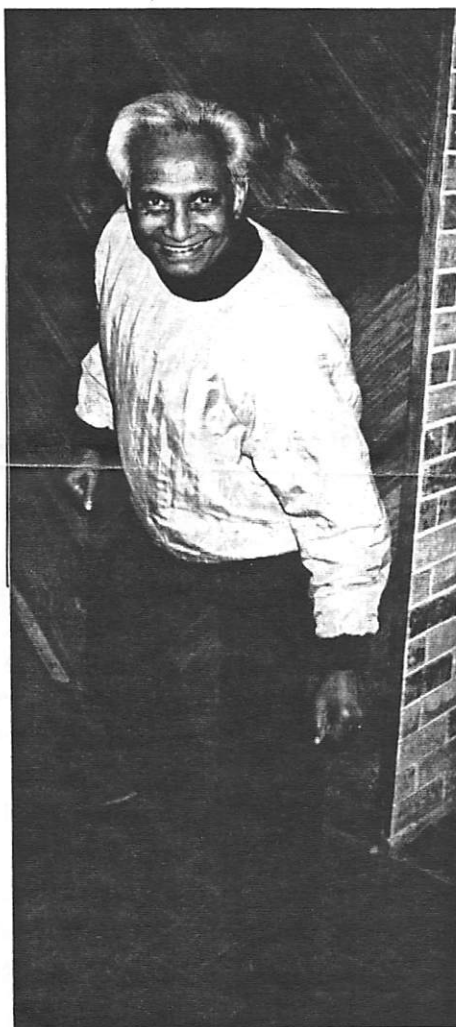
TOPIC

Compassion

by Dr. Shyam Kashyap

It is imperative for all human beings to have a fulfilling common goal. This goal, in my opinion, would be to grow in the all-embracing awareness of compassion and to maintain a passion for harmony with a canorously empathic disposition. This is a sure way to overcome human frailties, failures, and pitiful trepidation.

Compassion is not just a psychological expression nor a mere passion, but it is an eventful phenomena in the primordial psyche. It was Dante who said
"Compassion is not a



passion, but a noble disposition of the Soul, made ready to receive love, mercy and other ennobling passions."

Lack of compassion may lead to carnal passion and desire to possess, to own and to get obsessed with all material possessions. It is said that the primal psyche emerged with the creation itself and it is aptly a concomitant of the split in the unity which existed before creation. The split was appropriate and necessary for the eventful diversification of creation.

In the course of evolution, the primal psyche branched out in each and every created entity having life, thought, feelings, and movement. As the individuals grew in the process of evolution, he or she created many arbitrary divisions and identified with those divisions as distinctive individual ability-forming propensities. Now I may allude to the original split as

Inside This Issue

- 1 Compassion by SK
- 2 Ask Neva to Ask
- 3 Stu Silverman, MD: A doctor of musical healing
- 4 The Natural Cafe closes!

a compassionate act on the part of the combined forces of creation involved in each other as male and female, yin and yang, or Prakriti and Purusha. Apparently, there is a difference in the density of these two forces. In the condensation process, they became distinctly separate but they remain attracted to each other by the gravitational force of love and passion. In the human world, when love and passion combine serenely and purposefully with the effacement of self-interest, it becomes "compassion." This compassion is therefore inbuilt in the individual psyche but becomes a victim of the ego prevalent and active as a functional aspect of individuality and individuation. This brings about identity crises leading to a crisis of consciousness. Psychologically this aspect is considered necessary for the purpose of the growth and actualization of capabilities and possibilities inherent in the growing psyche or expanding consciousness. If this process gets multiplied or involved in the ego-centeredness, it becomes a motivational force for ill-conceived hierarchical superiority and depth instability. The ego which rises through the split, as its field of activities, tends to carve cleavages of conflicting personality traits and produces annoying cleavers. The ego's tendency is to identify with splits and separateness. This seemingly anomalous attitudinal disorder leads to psychological problems and the abbreviation of the intent intrinsically inherent in the primal psyche. This may lead to wrong doings, wrong thinking and wrong actions. Isolation plays an important part in the factor-fact complex. Here, compassion is

subjugated and relegated to almost a state of non-existence. All the important scriptures of the world proclaim that compassion is a bold stepping stone to any spiritual adventure. Compassion is closely associated with the spirit and an absence of compassion leads to a distortion of the functions of the spirit. This may be the main cause of modern day conflict in the individual and collectively in the society as a whole. The society is built by individuals as partners in a process of socialization and functional family orders with differences and derivatives. As the conflicting trends infiltrate deeply into the elements of the psyche, it generates waves of fear and insecurity. With this seemingly defensive front projected, it withdraws into inaction and blocks the path to harmony, love and the valuable assets of coordination and integration. The integral substance becomes a mere shadow and this shadow not only follows the individual but overcasts the knowing and understanding faculty.

The original unity needed a split in order to create. In the act of creation, the split in the unity serves the purpose of creation as harmonious intentionality. But all the multiple splits caused by human endeavors with selfish intents cause widening gaps in all the conscious activities. These activities, as a rule, reflect in the unconscious.

Mindful people whom we call sages, or custodians of ancient wisdom, have nice things to say about the human goals and the paths leading to these goals. These paths are beset with vicissitudes and painful turns and twists. As the multiple splits go on increasing, the psyche which is the

repository of love and compassion, fragments and splinters. Each fragment has a viable record of failures and deficient performances. The process involved replicates the existence of ignorance even in the solutions tried by different aspects of psychology and psychiatry. As has been stated elsewhere, the original split in the unity was integral to the creative harmony. As such, unity becomes integral in the process of the evolution of the created. It is evident that there is a problem in the process of growth. The problem is fragmentation. To stop this fragmentation and to make the psyche whole is the purpose of psychology and psychiatry. The origin of neurosis and psychosis has not been rightly understood in relationship with the primal split. This failure, construed as success, allows the accumulation of pieces and fragments of disturbance in the spectrum of the psyche constituted by the eccentricities of ego-centeredness. Remedial measures based on misunderstanding or no understanding of the cause and effect of the original split are responsible for a series of failures in tackling the psychological problems and the emotional upheavals in a large section of the human race. It is therefore necessary for knowledgeable counselors and therapists to go deep into the alternate healing techniques based on compassion, love and wisdom. The elixir of life is at hand; but one should know how to use it. It is therefore necessary to investigate the possible aspect of the ancient theory of rebuilding the psyche with the wholeness of spirit and spirituality. Compassion is a total force. It can unite all the splits, and make the

psyche whole. Compassion includes the sacrificial serenity and self-effacing grace of inner immensity. The divine always revels in compassion and reveals the mystery of life in love, which is the only panacea for all the ills and odds. Life is an eternal glorification of the Divine in the finite and the finite is the grateful womb of grace and creation of the Divine as its eternal birthright. © 1997, S. Kashyap

Ask Neva to Ask

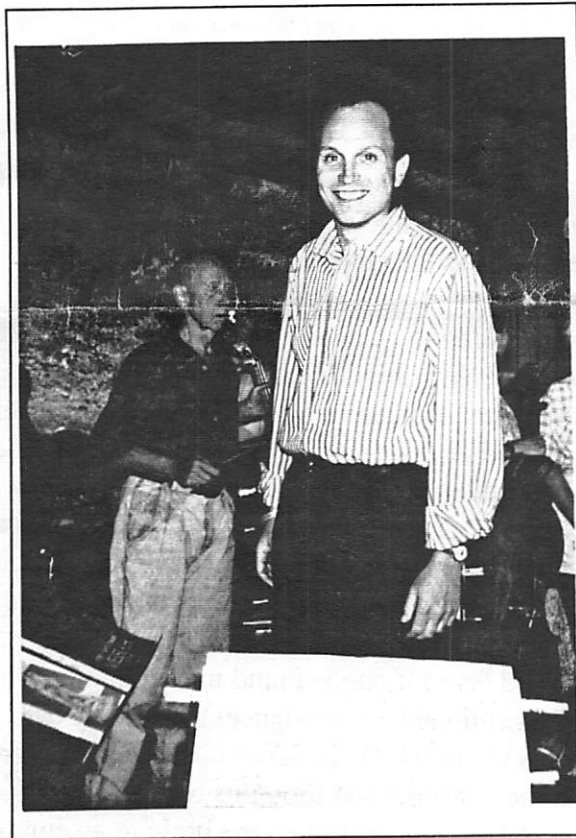
Neva Balduff shared some of her wonderful writings at the May retreat. She asks questions to the Source and receives wonderful answers like this one.....

How do we "conceive" -not in a physical sense- but, mentally?

Physical conception and mental conception are not so different as you might suppose. As the physical body has to be impregnated in order to conceive, the brain has to be impregnated in order to conceive a thought. Now this "impregnation" can come from many sources - from the very highest level or from that which is most base and vile. If one is constantly exposed to negativity (negative actions, negative environment), it is difficult for one's brain to be impregnated by anything but negativity, and negative concepts and thoughts will be the result. However, as one becomes evolved (even if one is found in the same aforementioned circumstances), he or she can access the mind where negativity does not exist, and the concepts and thoughts become more positive. One might liken the brain to an egg or ovum - ripe for fertilization, and the stimulus for thought as a seed or sperm which may or may not impregnate that egg. Just as millions of sperm attempt to find their way to the ovum to impregnate it, millions of stimuli attempt to find their way to the brain to start the conception of a thought. Not many will be successful. Even when the conception does occur, the thought is

sometimes aborted before it can mature - but once it matures, whether negative or positive, it becomes the progeny of that person and it demands attention, sometimes acting like a willful child and sometimes like an obedient child. Either way, one has to claim it as one's own. As they say in modern vernacular, how one "deals with it" is the key. How one nourishes thoughts which are loving, and how one keeps from unleashing those which are not, is the mark of a person's character - is the measure of one's awareness, the hallmark of one's evolution.

© 1997, Neva Balduff



A Psychiatrist & Healer with Music:

We were happy to be visited this summer by psychiatrist and friend Stu Silverman, MD who conducted the Messiah with a group of musicians and singers in the Jemez Mts. using spiritual healing and relaxation methods to increase the participants sense of harmony and delight.

Photo by P. Brown, 1992

Lynn Walters closes the Natural Cafe

For 15 years, we have enjoyed the delicious and exquisitely presented food grown and cooked by Lynn Walters, Wisdom Wave trustee and Treasurer. Our grief at the loss of this very special place is only surmounted by our happiness that Lynn now has a little more time to pursue her many other interests, including her beautiful family and her "Cooking with Kids" multicultural food education project with the Santa Fe school district. The project has received several grants as well as support from the Santa Fe School District itself. Expanding each year to more schools, it teaches children to select and cook a variety of nutritious natural foods. (Santa Fe, New Mexico)

Memorial Weekend Retreat, 1997

Inspiration, hilarity, and joy once again marked the high energy retreat for participants at the Sangre de Cristo Center this year. A beautiful communal sense cradled profoundly illumined teachings by Shyam as well as discourses on the Mother by Patricia and on the Hopi Prophecies by Gip Brown. Spontaneous offerings of joyful creative expression gave all a deep sense of sharing and participation. Neva Balduff's play "Bring in the Clones" starred Elliot McDowell as the cloned Caesar, Gip as a cloned Shyam, Lynn Walters as a cloned Cleopatra, Neva as the real Caesar and, I'm sorry, but we just can't admit to you who the mad scientist turned out to be???

MEMBERSHIP in WISDOM WAVE:

If you wish to become an annual member of WW, a 501 (c) (3) tax exempt organization, and have not done so in the last year, please send a \$25 contribution to:

**WISDOM WAVE
PO BOX 3558
SANTA FE,
NEW MEXICO 87501**

Membership enables you to special access to programs. A \$5 donation will keep the newsletter coming to you. (505) 455-2268